

1 Each number stop corresponds to an audio track. Walking distance: 1.5 km (25 mins)

Tracklist (approx 45 minutes, 20 MB)

- 1** Introduction (0.00) Trinity College
- 2** An invention to set you inventing! (2.40) Science Gallery, TCD
- 3** A useful number, a medical jelly (5.30) Chemistry TCD
- 4** The engine that electrified the world (9.00) Parsons Building, Engineering TCD
- 5** Face cream of the famous (13.45) Sweny's Chemist, Lincoln Place
- 6** The valuable hole! (16.30) Letter-box, corner Kildare & Nassau St
- 7** The syringe and the stethoscope (19.20) RCPI, No 6 Kildare St
- 8** Flavoured crisps & the Guinness widgeot (23.15) Buswell's Hotel, Molesworth Street
- 9** Copyright (28.55) Royal Irish Academy, 19 Dawson St
- 10** The Irish invented whiskey, twice! (32.10) Celtic Whiskey, 27 Dawson Street
- 11** Milk in everything! From chocolate to cream liqueur (35.20) Butler's Café, Grafton Street
- 12** Molly Malone (40.15) Performed by Gary O'Connor

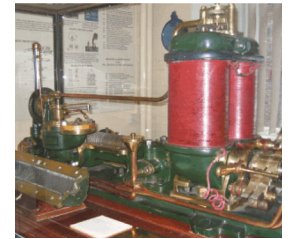
Practicalities

The tour takes about 90 minutes – longer, if you visit any of the visitor centres along the way, or stop for coffee! Take care crossing streets, use pedestrian crossings where possible, and watch for uneven pavements and other hazards. We recommend comfortable shoes & rain gear!

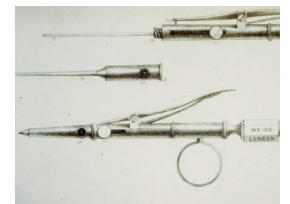
Disclaimer: Ingenious Ireland has made every effort to ensure that the information for this tour is correct, but we assume no responsibility for any errors or any hazards along the route. Users of this audio guide are responsible for their own safety at all times.

Dublin City of Science 2012

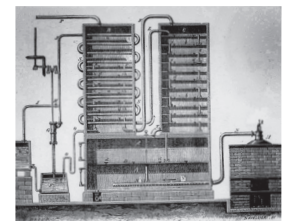
This walking tour was developed with support from Dublin City of Science 2012, which brings a celebration of science to Dublin, supporting over 160 events and activities that cross the worlds of art and culture to entertain the public and bring science to life. www.dublinscience2012.ie



4 The steam turbine: invented in 1884, it changed the world. (Exhibition in TCD's Parsons Building, Dept of Mechanical & Manufacturing Engineering)



6 Commercial version of the syringe invented by Francis Rynd in 1843.



10 Aeneas Coffey's 'column still' invented in 1830.



11 Milk chocolate was created by Irish doctor Sir Hans Sloane in the 1680s.

Explore more!

Read: For more inventions, dip into our e-book, **'Ingenious Dublin, Mary Mulvihill's guide to the city's marvels, inventions and discoveries'**. It's packed with stories and places to visit, and available from Amazon Kindle. Try the free chapter today!

Visit: **Sugru** (www.sugru.com) for lots of ingenious ideas • **Science Gallery**, TCD, for exhibitions, shop & café (www.sciencegallery.com) • **Parsons Building**, TCD Engineering, Mon-Fri 9am-5pm • **Royal College of Physicians in Ireland**, heritage tours by appointment (www.rcpi.ie/HeritageCentre).

Written and Narrated Mary Mulvihill
Sound Production Andy Christian
Design Carton LeVert
Music Gary O'Connor
 © Mary Mulvihill & Ingenious Guides Ltd 2012
hello@ingeniousireland.ie

